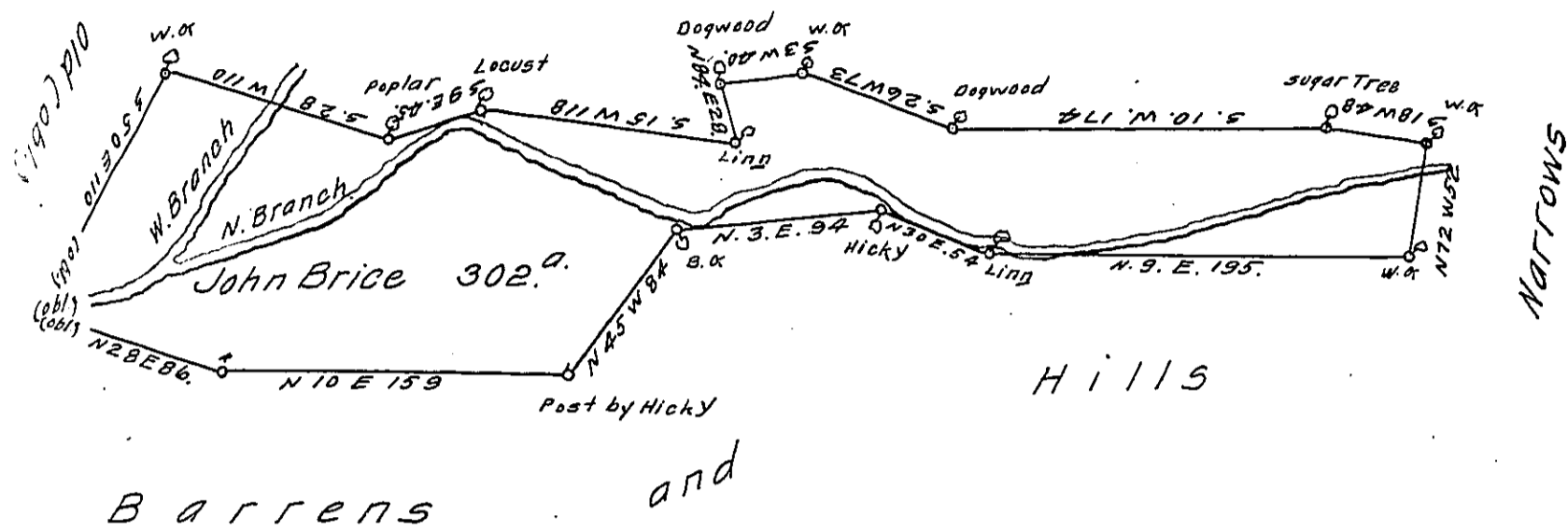


V a c a n t H i l l s



A Draught of a Tract of Land called the long Meadow situate at and above the Forks of Wills Creek in the Township of Cumberland in the County of Bedford. containing three hundred and two Acres and the usual Allowance of Six Cent for Roads &c. Surveyed the 10<sup>th</sup> & 11<sup>th</sup> Days of November 1774 for John Brice in pursuance of a Warrant Dated the 3<sup>d</sup> Day of June 1762.

Thomas Smith D.S.

To John Lukens Esq<sup>r</sup> }  
 Surveyor General &c. }

N.B. The Deputy Surveyor imagins that there has been a Survey made on part of the above Tract of which the Ling is a Corner & it runs S. 15. W. 41 to a Sugar Tree N 65 E to (obl.) & up the C<sup>r</sup> to the Hickory but he could find no more of the Lines nor gain information concerning it.

IN TESTIMONY that the above is a copy of the original remaining on file in the Department of Internal Affairs of Pennsylvania, made conformably to an Act of Assembly approved the 16th day of February, 1833, I have hereunto set my Hand and caused the Seal of said Department to be affixed at Harrisburg, this fourteenth day of September 1911.

*Henry Honck*  
 Secretary of Internal Affairs.